



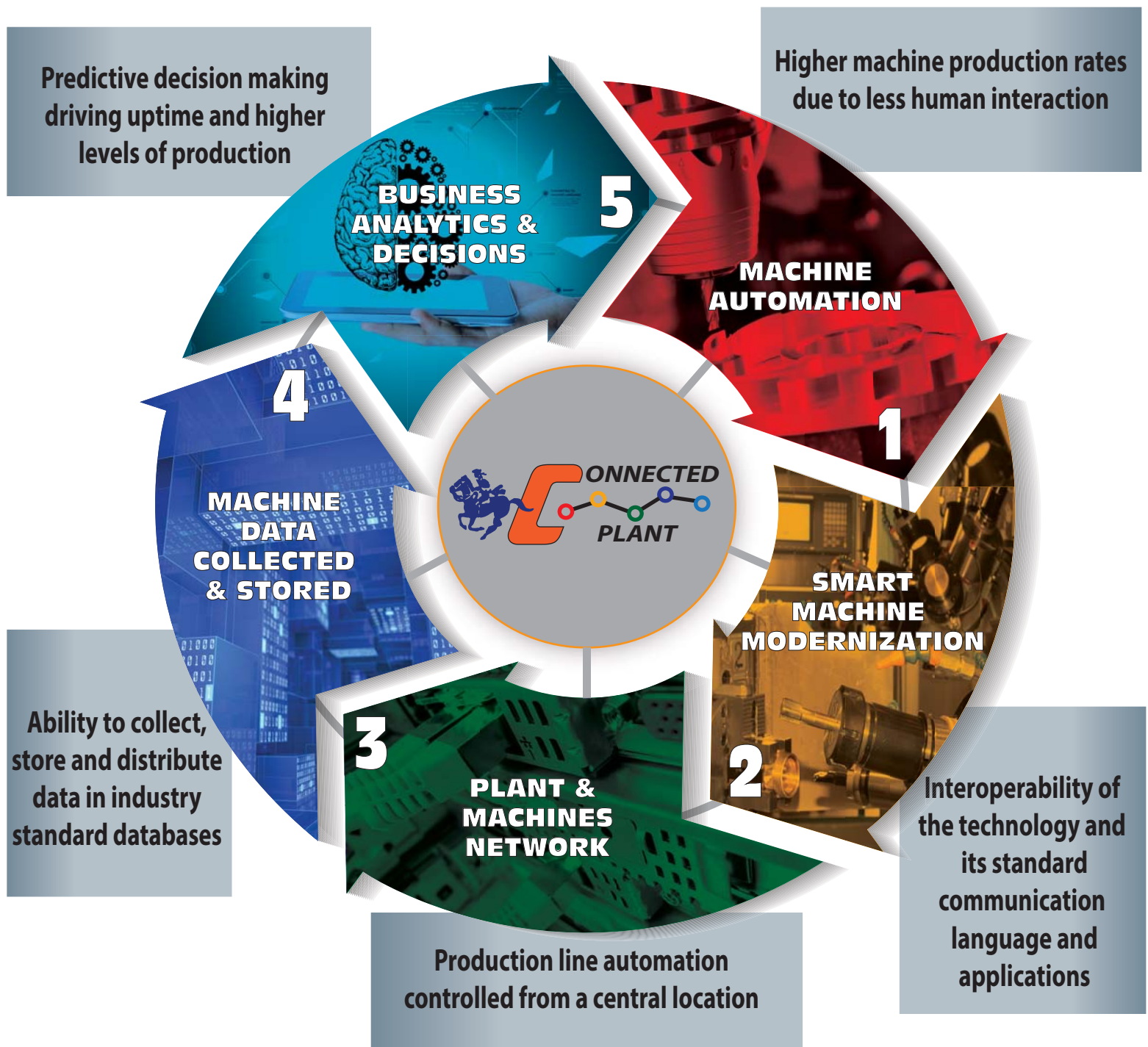
## Technology Drives Results

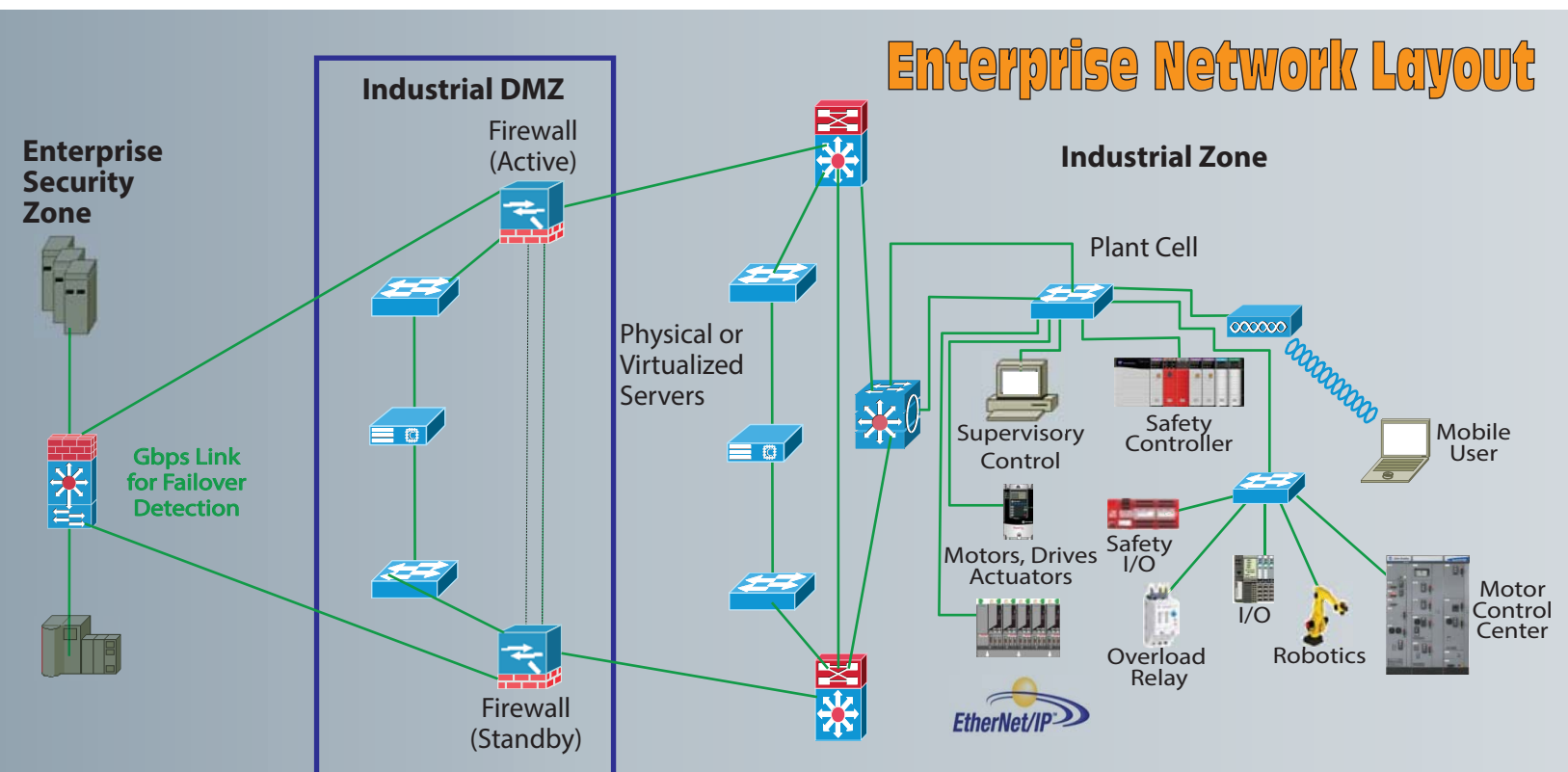


- Increased machine uptime
- Improved quality of final product, with reduced number of defects
- Higher production rates driven by efficiencies
- Lower energy costs
- Improved material costs
- Increased personnel and plant safety
- Supply chain control and optimization
- Regulatory compliance
- Standardization on new technologies

# The Modernization Continuum

Is a life cycle process that manufacturers can use as a guide to drive toward a Connected Enterprise that uses technology to enhance the manufacturing process driving higher production while minimizing costs to stay competitive. The lifecycle process of the Continuum allows you to move in and out of any phase seamlessly.





# LOCATIONS

## **\*Mokena**

8807 187th Street  
Mokena, IL 60448  
(708) 995-3251

## **\*Peru**

1220 Wenzel Road  
Peru, IL 61354  
(815) 224-1510

## **\*Hartland**

1515 Walnut Ridge Drive  
Hartland, WI 53029  
(262) 369-7100

## **\*Buffalo Grove**

975 Weiland Road  
Buffalo Grove, IL 60089  
(847) 499-6000

## **\*Racine**

821 South Airline Road  
Racine, WI 53406  
(262) 635-5050

## **\*West Allis**

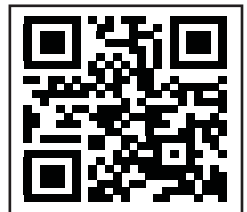
11540 W. Rogers Street  
West Allis, WI 53227  
(262) 549-1983

## **Rockford**

4602 Interstate Blvd  
Loves Park, IL 61111  
(815) 885-6500

***\* Authorized Rockwell  
Distributor Locations***

**[www.revereelectric.com](http://www.revereelectric.com)**



**REVERE**  
 **ELECTRIC**  
Messenger of Service **SUPPLY Co.**

Revere Electric Supply is a fourth generation,  
family owned full-line electrical distributor.

### OUR MISSION IS:

To Deliver Innovative and Industry Leading Customer Centric Solutions,  
Products and Services to the Industrial Automation and Electrical Markets